

The Threshing Floor

July 2016

Newsletter of the Guild for Psychological Studies

Web site: www.guildsf.org

Phone: (415) 561-2385

P.O. Box 29385, San Francisco, California 94129-0385

e-mail: office@guildsf.org

Guild Vision: The Guild envisions a world in which the significance of each person's truth, authority, and inspired purpose finds fulfillment in life and community.

Guild Mission: Guild seminars offer a way of psychological and spiritual transformation that inspires individuals to live their purpose, expand consciousness, and discover and create meaning in their lives and community.

RIP VICTIMS OF ORLANDO

“GENERALLY THEY GO, THE BEAUTIFUL,
THE TENDER,

THE KIND I KNOW, I KNOW

BUT I DO NOT APPROVE AND I AM NOT
RESIGNED!”

By Edna St. Vincent Millay



“A ROSE IS A ROSE, IS A ROSE....” (Gertrude Stein)
- Watercolor by Maris Pravata Helfrich, 5/16

Poems

Editors' Note: In response to the Editors' request for poems or parts thereof that were meaningful to readers, this offering from Maureen Draper:

Friends, this poem, a portion of a longer one in Coleman Barks' *The Red Book*, helped me at a difficult time. Perhaps you have one you'd like to share? If so, email it to office@guildsf.org. Best wishes, Maureen Draper

Rumi's "Buoyancy"

To praise is to praise
how one surrenders to the emptiness.

To praise the sun is to praise your own eyes.
Praise the ocean. What we say, a little ship.

So the sea journey goes on,
and no one knows where.

Just to be held by the ocean
is the best luck we could have.
It is a total waking up.

We are groggy, but let the guilt go.
Feel the motions of tenderness around you,
the buoyancy.

Final Call - Nominations for the Board of Directors Are Due by July 20th

By: Elizabeth Bremer, Secretary of the Board
(Lbremer4@[aol.com](mailto:lbrem4@aol.com))

Help ensure that the work that has been such an important part of your life continues to grow and flourish. The Board invites you to contact one of us, or send a friend our way, so that we can share more information about board service. We are recruiting candidates between now and July 20th in preparation for the annual August election.

Board members bring varied talents, experiences and perspectives to the common purpose of helping the Guild realize its mission. Board work encompasses support for leaders, community outreach and financial management within the Board's overall scope of providing strategic, policy, program and operations oversight for the organization.

By July 20th, potential candidates must confirm their willingness to run and have the official nomination of a voting member in good standing (voting members may nominate themselves). Nominations are due to the Guild office by 5:00pm Pacific Daylight Time, Wednesday, July 20, 2016.

Along with their confirmation, candidates are asked to provide a brief statement of interest and qualifications to be included with ballots (approx. 150 words). Ballots will be mailed to Guild voting members on August 1st.

The August election will provide for up to four directors to be elected for two-year terms. There are two vacant board positions, and two current directors are completing their terms: Hal Childs and Harry Henderson. Both Harry and Hal will run again. Other directors are Elizabeth Bremer, Jennifer Larson, and Denise Dinwiddie, who are at mid-term. We look forward to hearing from you.

Elizabeth Bremer, Secretary of the Board

(Lbremer4@[aol.com](mailto:lbrem4@aol.com))

July Birthday's

Sonya Milton	Jul 5
Regine Wilson	Jul 7
Dennis Serdahl	Jul 8
Fay Kilgore	Jul 9
Louise Frank	Jul 13
Dudley Pace	Jul 13
Donna Sachs	Jul 14
April Barrett	Jul 20
Ann Keiffer	Jul 21
Ruth O'Day	Jul 26
Hugh Leonard	Jul 27
Lisa Yount	Jul 28
Terry Dowdy	Jul 29



Editor's Note: LynneAnne Forest writes that she loved the poems in the May Threshing Floor. She does not have any poems to offer, but is now having fun with learning how to paint. She adds that she accepted her writing teacher's offer to display her painting, "Red Poppies in a Vase," after Van Gogh, at an art show in Santa Rosa, July 9-10, 16-17, entitled LIFE BEGINS WITH A PAINT BRUSH. The show features 18 Senior and Super Senior Artists, aged 65 to 95. The painting itself will not be for sale, but prints will be available. There will be an Artists' Reception from 1 to 4 on Saturday, July 9. Contact LynneAnne at 707 539-3809 or lynneanneforest@gmail.com for location.

Life Begins With a Paint Brush
Senior and Super Senior Artists, 65 to 95
Most of the artists represented in this
outstanding exhibition and sale
began painting in their senior years.
www.artflare.net

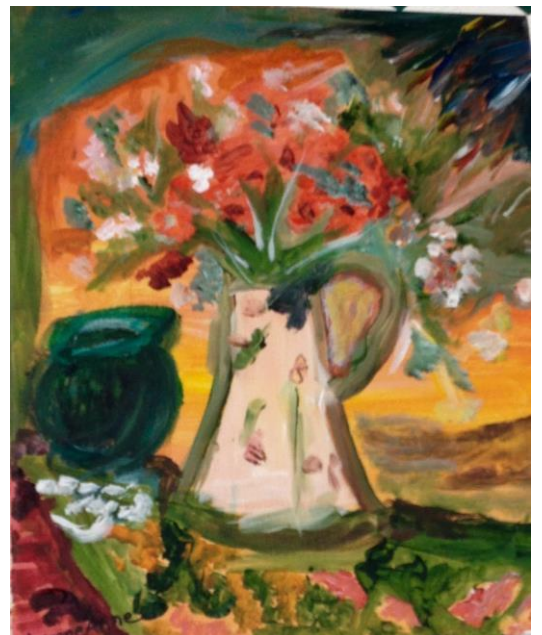
July 9 and 10; July 16 and 17
1 to 5pm
Art Flare Studio, Building 3, Gallery #106
3840 Finley Road Santa Rosa, California



Nina Ayin Reimer, our painting teacher here at Brookdale, has organized this art exhibition. Three of my paintings will be in the exhibit and for sale.

Lynne Anne Forest

ARTISTS' RECEPTION
Saturday, July 9, 2016
1 to 4 PM
It would be fun
to have you come!



Stay Connected

Bob Ridder, Administrative Coordinator, is available for all inquiries by phone at (415) 561-2385, or by email at office@guildsf.org.

Send your email address to office@guildsf.org so that we can keep you connected and up-to-date on Guild events. Also be sure that we have your current mailing address so that we are able to send you this yearly edition of the newsletter. Please keep us updated with your address changes.

Mailing Address

Guild for Psychological Studies
P.O. Box 29385
San Francisco, CA 94129-0385

Guild Website

Visit www.guildsf.org for information about seminars and events, and to register for seminars. The website also has general information about the Guild, past issues of the Threshing Floor, relevant news, and links to resources. If you would like to post information of interest to the Guild community, please email harryhenderson51@gmail.com, our web administrator.

Guild Facebook Page

<https://www.facebook.com/guildsf>, launched in January! If you haven't yet, please "friend" and "like" us!

Newsletter

To receive 12 issues of *The Threshing Floor* a year, please contact the Guild office. There is no charge for an e-mail subscription. For a print subscription, please send a check for \$25 to the Guild office.

Items for inclusion in the Threshing Floor should be mailed to the Guild Office, Attn. Threshing Floor Editor, or emailed to office@guildsf.org. The deadline for each issue is the 20th of the month. Items received after that date will be published the following month.

Production & Layout Editor: Wilene Chang
Content Editors: Janet Boeth Jones, Sue Renfrew
Distribution: Bob Ridder

Disclaimer: The opinions expressed in this newsletter (by contributors other than staff and directors) are the writers' and not necessarily an official position of the Guild.

Publishing House sales – books and CDs

Order publications on the Guild website, or contact Carina Ravelly at guildpublishing@yahoo.com.

Donations

Many thanks to our donors! Your financial support in any amount helps the Guild with seminars and other events, with the training of leaders, with outreach, and with other new and ongoing efforts. Because the Guild is a registered nonprofit organization, with 501(c)(3) status, your contribution may be tax deductible. Donations should be directed to the Guild office address, or you may donate online using the PayPal link you'll find by selecting the Make a Donation link on the main page of our website.

Volunteers

There are several people who fill necessary volunteer roles in the Guild. If you would like to be a Guild volunteer, please contact the Guild office at office@guildsf.org and let us know ~~particular~~ volunteer roles that appeal to you. Currently volunteers are members of the editorial staff for the Threshing Floor; members of the Board of Directors; serve as continuing education coordinator; train to serve as seminar coordinator, committee person or cook; provide transportation to/from seminars for attendees; help to catalog or research Guild archive materials; write reviews for Guild books and other publications; etc.

Friends and Members

Friends of the Guild are donors and others interested in receiving Guild information who are not Voting Members. Voting membership requires active participation in some form of leadership or committee role, or other volunteer effort, and the payment of annual dues. Voting members may receive a print subscription to the Threshing Floor upon request.

Board of Directors

Elizabeth Bremer, Secretary
Hal Childs, President
Harry Henderson, Treasurer
Denise Dinwiddie
Jennifer Larson, Vice
President

